



Croatian Science Foundation



**Accumulation, Subcellular Mapping and Effects of Trace Metals in Aquatic Organisms
(AQUAMAPMET)**

Bivalves and crustaceans - important bioindicators in ecotoxicological and water quality assessment

Dr. sc. Sanja Gottstein, Assoc. Prof.

Dr. sc. Jasna Lajtner, Assist. Prof.



UNIVERSITY OF ZAGREB
FACULTY OF SCIENCE
DIVISION OF BIOLOGY
Croatia

Rooseveltov trg 6 ♦ 10000 Zagreb

tel +385 1 4877700 ♦ fax +385 1 4826260

uredbo@zg.biol.pmf.hr ♦ <http://www.biol.pmf.hr>

Freshwater bivalves



Jasna Lajtner, PhD

Assistant Professor

Faculty of Science

University of Zagreb

Rooseveltova trg 6,

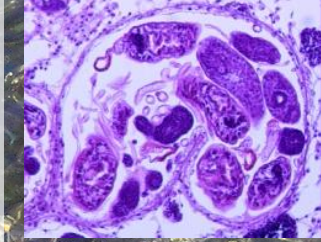
10000 Zagreb, Croatia

e-mail: jasna.lajtner@biol.pmf.hr

tel: + 385 1 4877 750

fax: + 385 1 4826 260

mob: + 385 91 797 8786



Research interests:

Ecotoxicology, histopathology

Malacology; ecology, biology and phylogeny of freshwater gastropods and bivalves

Invasive mollusc species, distribution and impact on native species

Current projects:

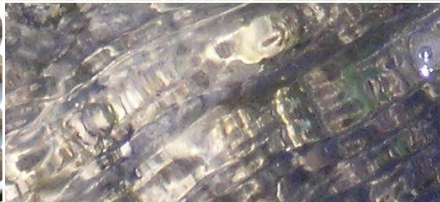
NATURA 2000 species: snail *Anisus vorticulus* and bivalve *Unio crassus*

Malacofauna of the river Krka

Freshwater bivalves

AQUAMAPMET project responsibilities:

- **field work:** bivalve sampling, measurement and determination of species



- **lab work:** dissection of bivalves

Crustaceans



Sanja Gottstein, PhD

Associate Professor

Faculty of Science

University of Zagreb

Rooseveltova trg 6,

10000 Zagreb, Croatia

e-mail: sgottst@biol.pmf.hr

tel: + 385 1 4877 703

fax: + 385 1 4826 260

mob: + 385 98 1305963

Research interests:

Speleobiology, Freshwater ecology, Environmental assessment

Biology, ecology, taxonomy and phylogeny of groundwater, spring, stream and river crustaceans.

Invasive crustaceans, distribution and impact on native species

Current projects:

Multimetric evaluation of crenobiocoenosis

Amphipods of peat bogs

Crustaceans

AQUAMAPMET project responsibilities:

- **field work:** measurement of physical and chemical water parameters, amphipod sampling using benthos net on representative substrata





Crustaceans

AQUAMAPMET project responsibilities:

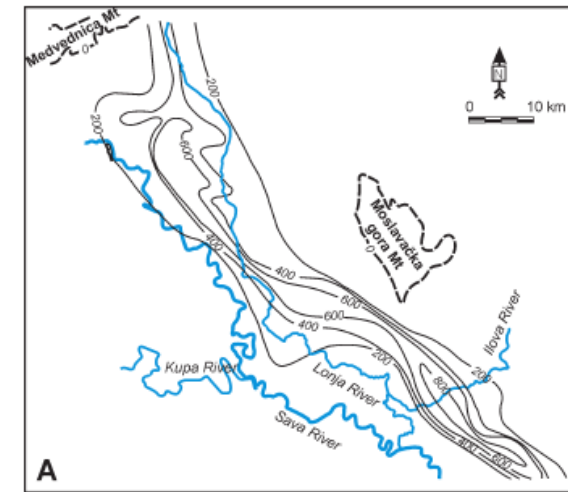
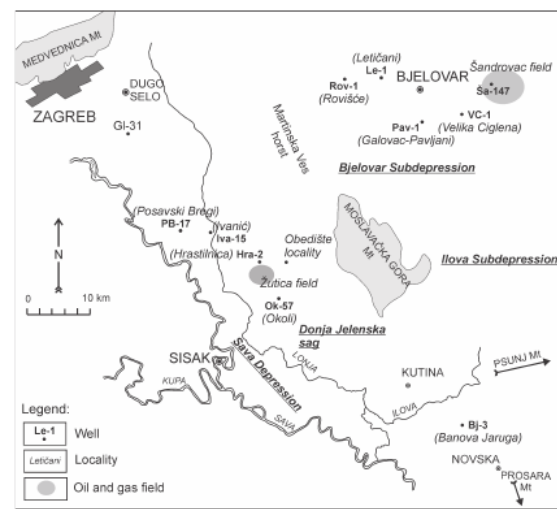
- **lab work:** identification and enumeration of amphipod (invasive) species → amphipods infected with acanthocephalans



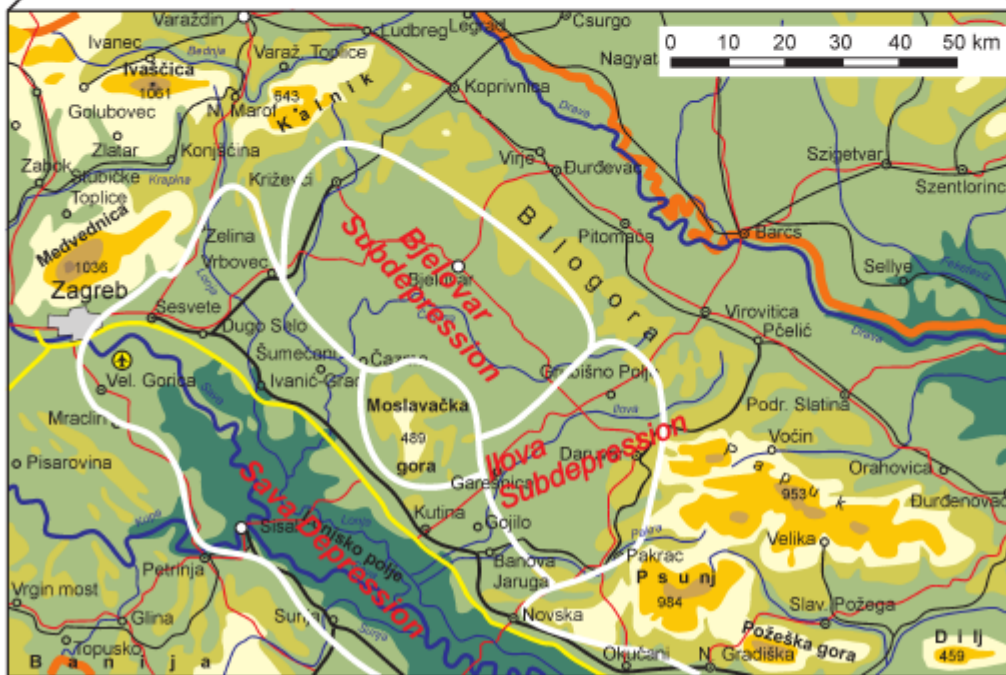
STUDY AREAS



ILOVA RIVER



— 200 — Isopach line (m) - - - 0 - - - Basement line



- The Ilova River catchment:
- Spring: 185 m a.s.l.
 - Area: 1600 km²
 - Length: 85 km



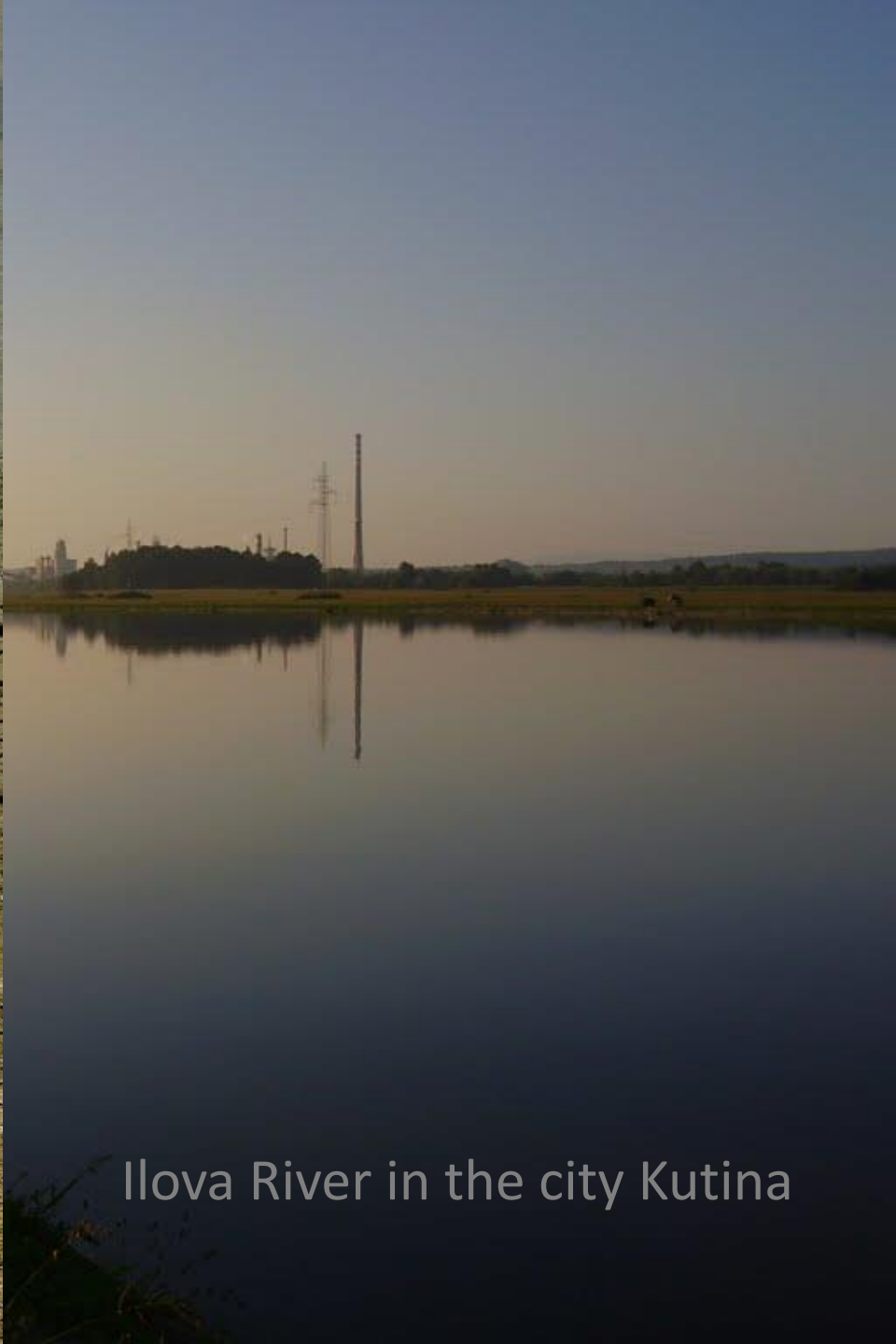
Ilova River



Ilova River in Tomašica, upstream of the city Kutina

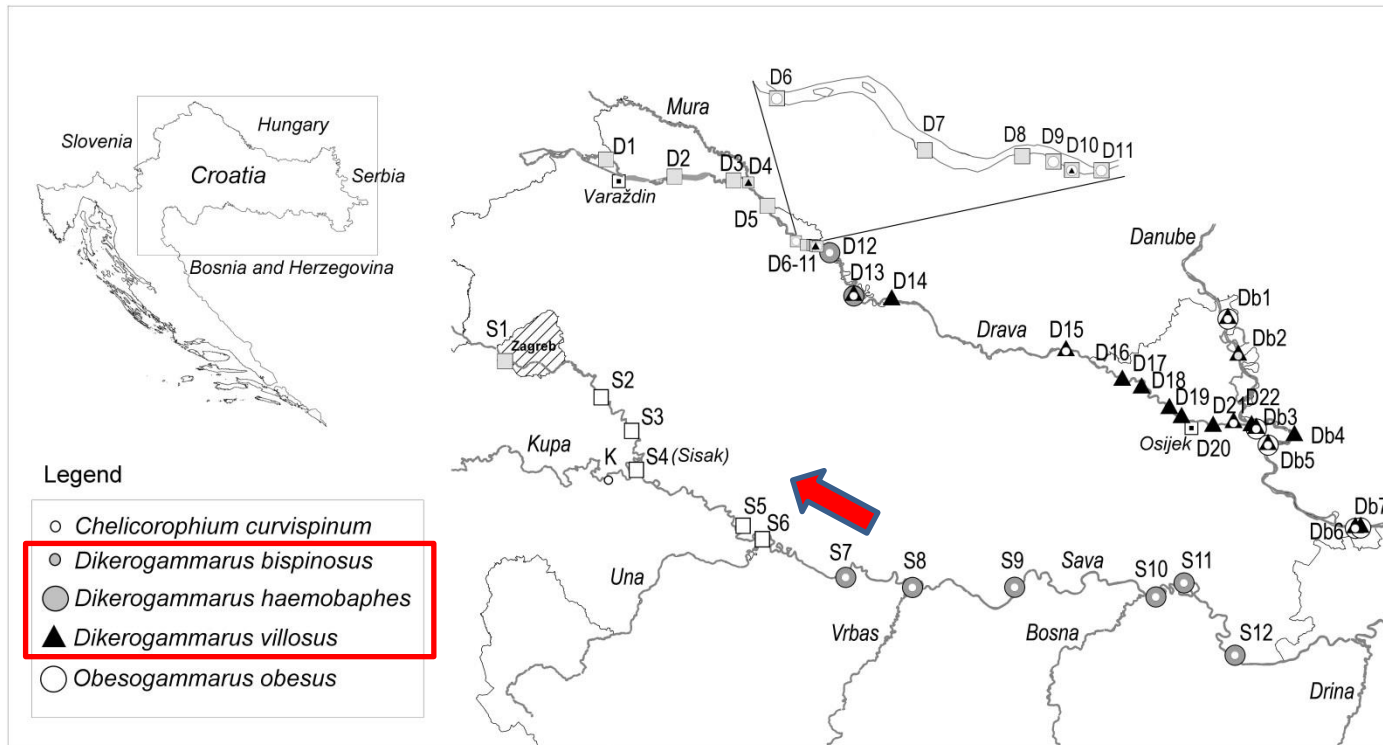


Ilova River in Piljenice
upstream of the city
Kutina



Ilova River in the city Kutina

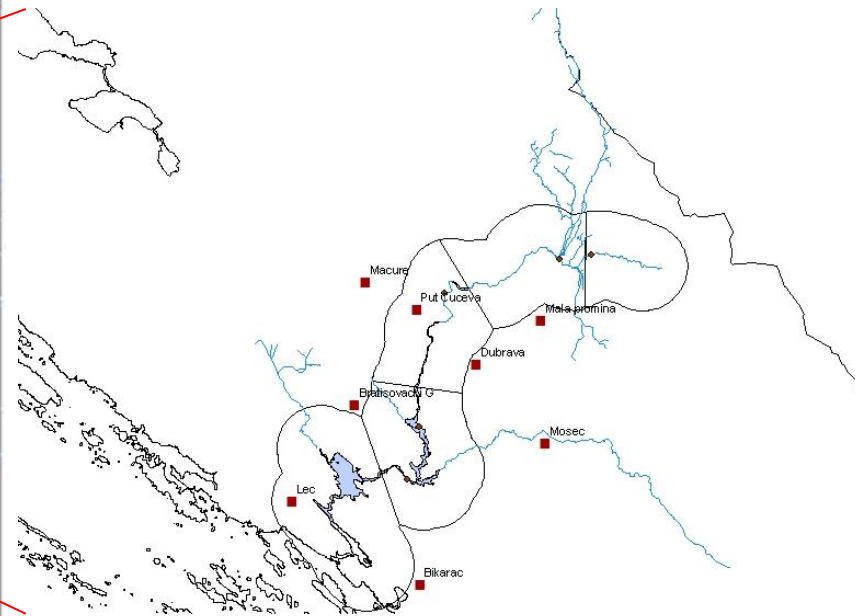
INVASIVE AMPHIPOD SPECIES



KRKA RIVER

The Krka River catchment:

- Spring: 222 m a.s.l.
- Area: 2500 km²
- Length: 53 km



KRKA RIVER

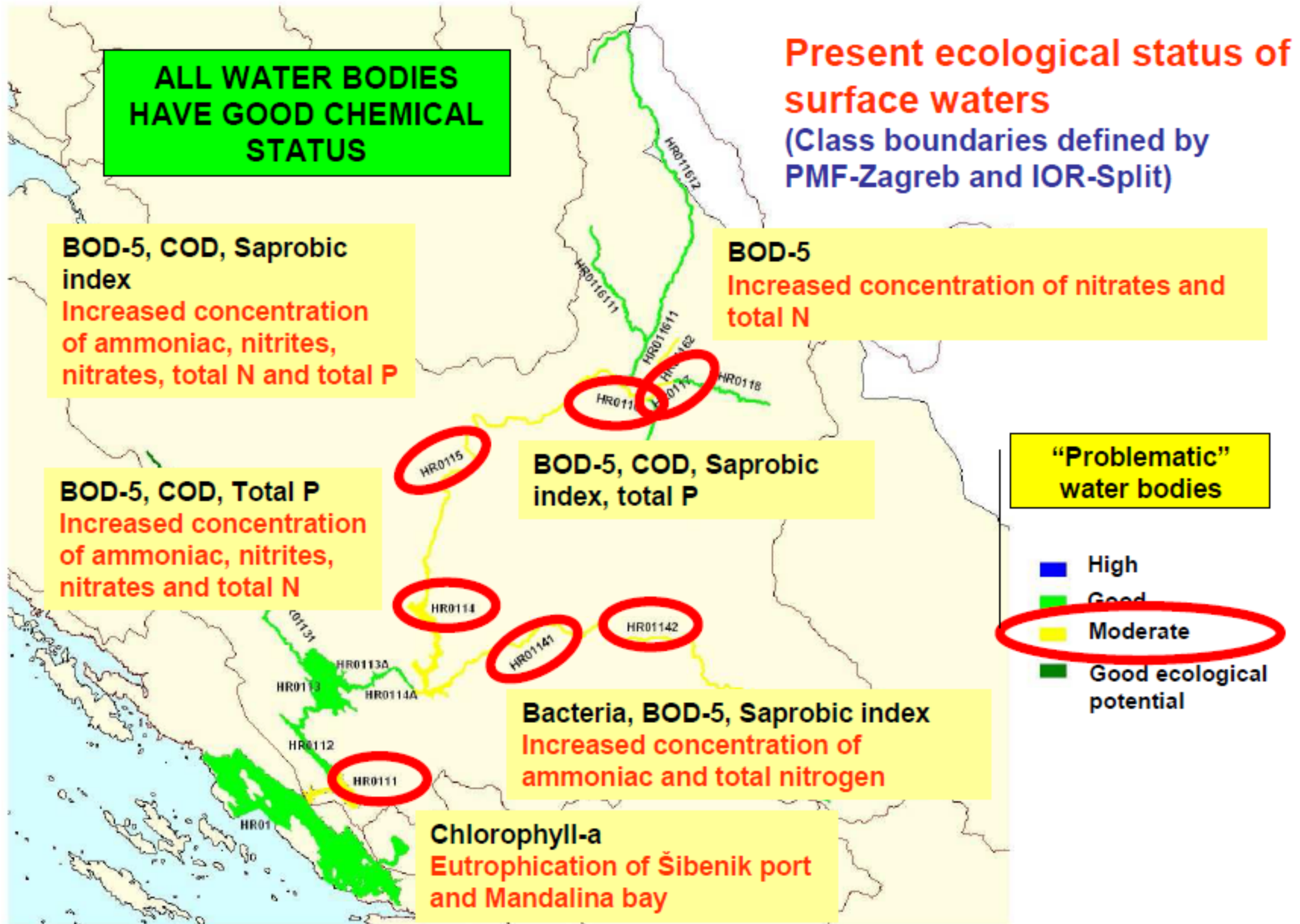


NI	Grad	Naziv industrije	NI	Grad	Naziv industrije
1.	Benkovac	BADEL 1862 d.d.	19.	Šibenik	N.P. Krka - sank. čvor na D. ob.
2.	Benkovac	TCG metalni lijev	20.	Šibenik	Autobransport d.d.
3.	Benkovac	PAPE & SONS	21.	Šibenik	Remontno brodogradilište d.o.o.
4.	Stankovci	Klaonica MILETIĆ	22.	Šibenik	TLM d.d.
5.	Drniš	Klaonica GRČIĆ	23.	Šibenik	TLM d.d. - Površinska zaštita
6.	Drniš	Dalmacijavino d.d.	24.	Šibenik	VINOPLOD VINARIJA d.d.
7.	Drniš	BRAMAC	25.	Šibenik	SOLARIS d.d.
8.	Drniš	TOF	26.	Šibenik	Opća bolnica Šibenik
9.	Drniš	Klaonica MALENICA	27.	Vodice	Ujara TRIBUNJ
10.	Knin	HŽ	28.	Vodice	ACI d.d.
11.	Knin	Knauf	29.	Vodice	Hotel IMPERIJAL
12.	Knin	Opća bolnica	30.	Vodice	Ujara ANIVA
13.	Skradin	ACI d.d.	31.	Vodice	Hotel Olympia
14.	Šibenik	Klaonica SLADIĆ	32.	Vodice	Hotel Punta
15.	Šibenik	Klaonica VLAČIĆ	33.	Vodice	TD Vodice - betonara
16.	Šibenik	IVANAL	34.	Primošten	Autokamp ADRIATIC
17.	Šibenik	N.P. Krka - ugost. Objekt	35.	Primošten	Marija KREMIK
18.	Šibenik	N.P. Krka - sank. čvor na L. ob.	36.	Primošten	Ujara FALKON
19.	Šibenik	N.P. Krka - sank. čvor na D. ob.	37.	Primošten	PZ DOLAC

Point source pollutions
 ● (37 polluters in CW register
 only 3 significant)

■ **Urban waste waters**
 (9 municipalities > 2000PE)

KRKA RIVER



AMPHIPOD DIVERSITY IN THE KRKA SPRING

12 taxa

Echinogammarus acarinatus (Karaman S., 1931)

Echinogammarus pungens (Milne Edwards, 1840)

Echinogammarus veneris (Heller, 1865)

Fontogammarus dalmatinus dalmatinus Karaman S., 1931

Fontogammarus dalmatinus krkensis Karaman S., 1931

Gammarus balcanicus Schaferna, 1922

Hadzia fragilis S. Karaman, 1932

Niphargus hebereri Schellenberg, 1933

***Niphargus cf orcinus* Joseph, 1869**

Niphargus salonitanus S. Karaman, 1950

***Synurella ambulans* (Müller, 1846)**

Typhlogammarus mrazeki (Schaferna, 1906)

11 species

7 genus

4 families

Gottstein et al. 2007

Thank you for the attention!!!

