

Histopathological biomarkers in fish intestine

Josip Barišić, PhD, DVM
Wellfish Diagnostics Ltd.

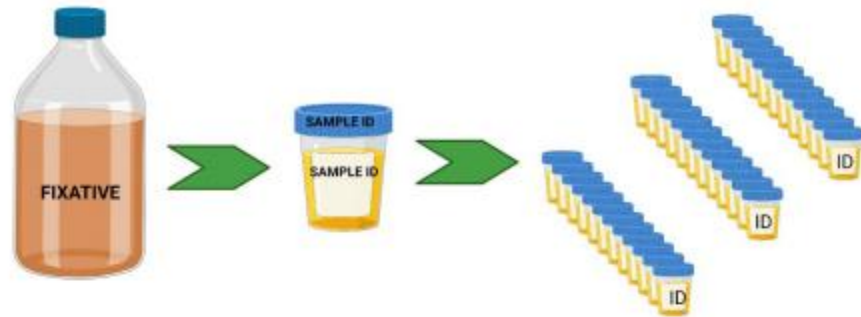
KICK-OFF MEETING

Integrated evaluation of aquatic organism responses to metal exposure: gene expression, bioavailability, toxicity and biomarker responses (BIOTOXMET)

Zagreb, 11th October 2021



Protocole for histopathology sampling

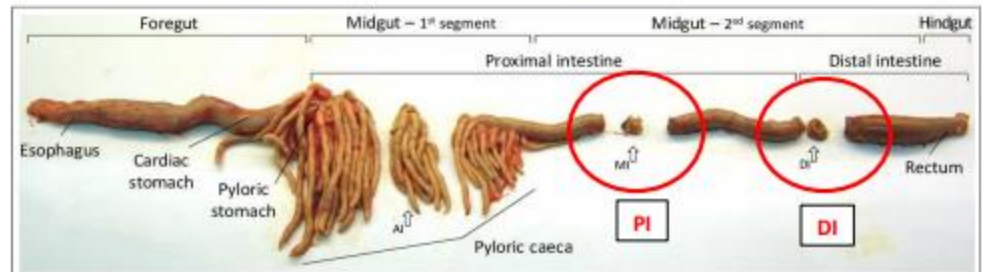


1. Label each sample cup (ID) on the lid and on the cup. Prepare 10 cups per sampling point (site). Total 30 cups for each field trip.
2. Pour Modified Hartmann/Davidson fixative (Biognost) into each sample cup, to make it half full (30-40 mL). Doesn't have to be precise. Tightly close the lid. Keep all chemicals on room temperature.
3. On the field you will need: pair of scissors and scalpel to cut tissues and pair of tweezers



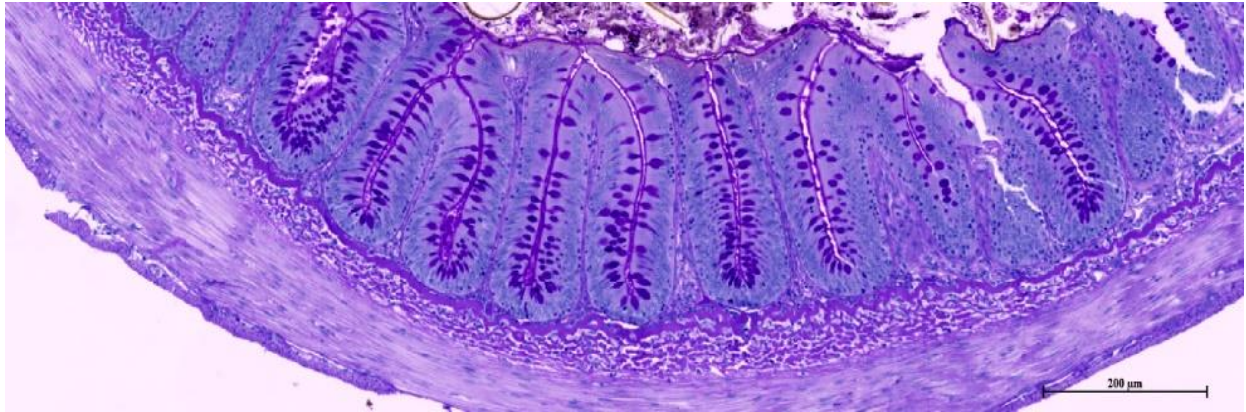
4. From intestine please take two parts – proximal and distal (0.5 cm size)

Orientation: 2 cm from the last pyloric caeca (PI) – PROXIMAL INTESTINE
2 cm before rectum (DI) – DISTAL INTESTINE

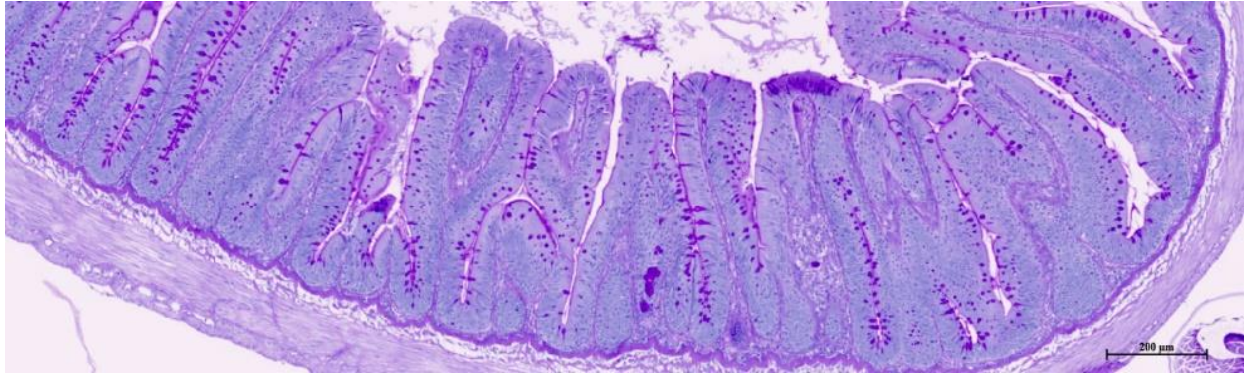


Histopathology processing

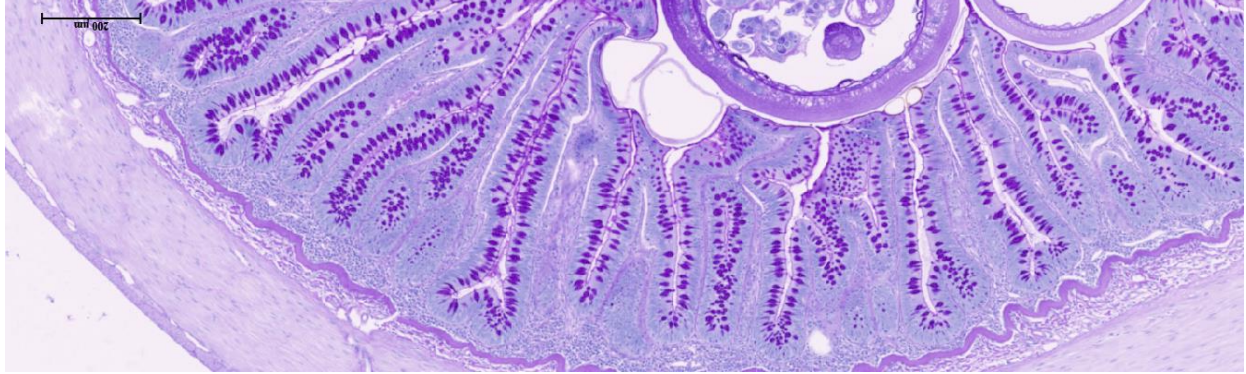




BRLJAN LAKE



KNIN



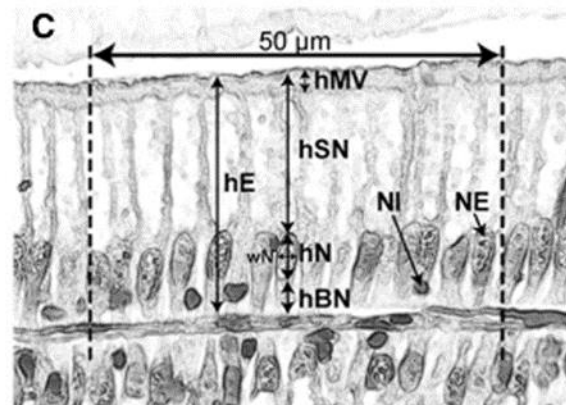
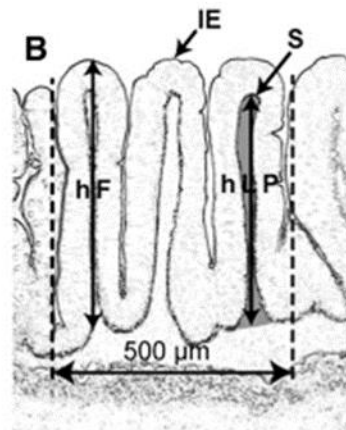
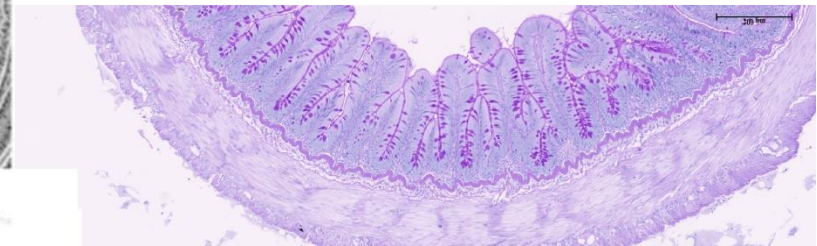
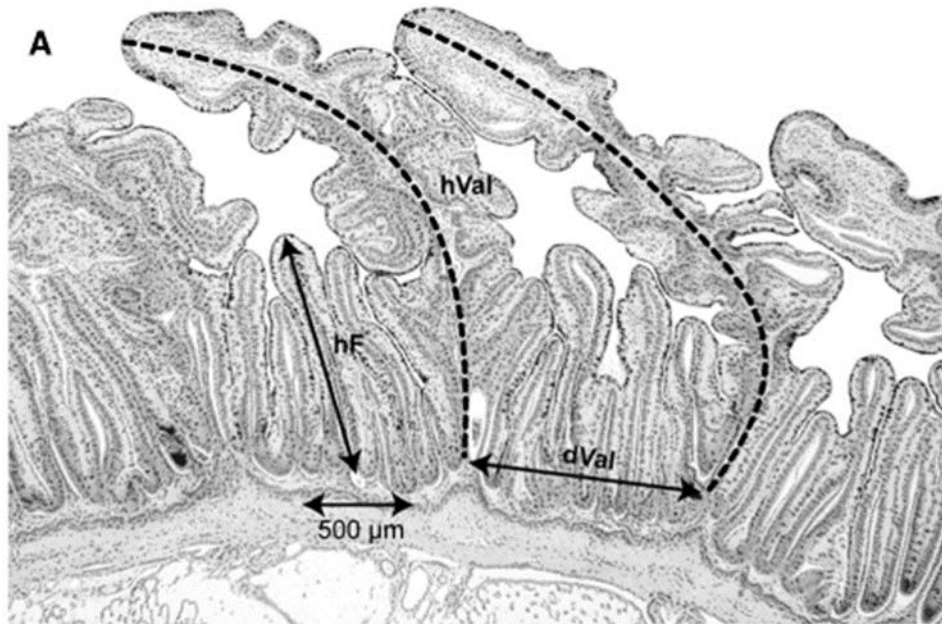
REFERENCE SITE

INTESTINES

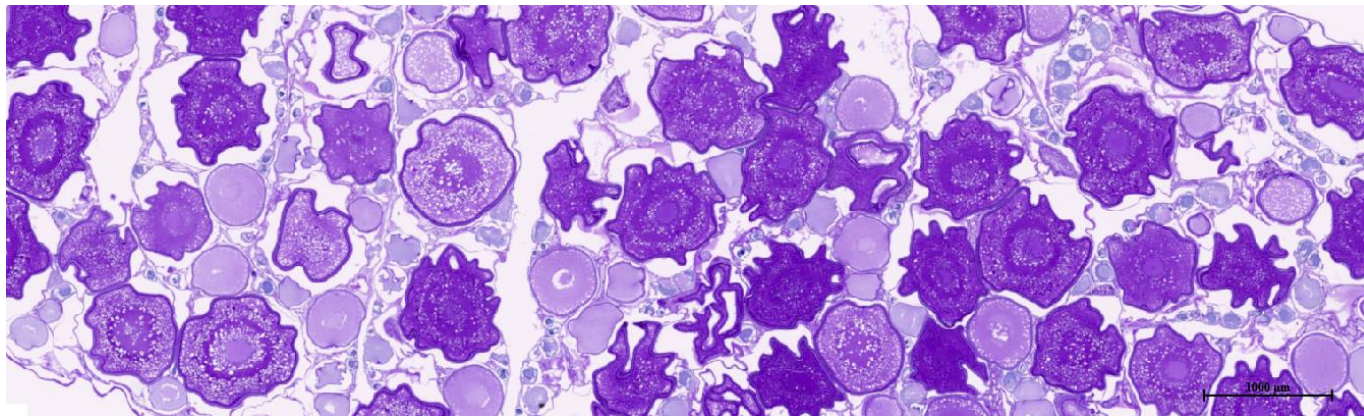
Semiquantitative histopathology

Scoring system	Reaction pattern		
	Control status (I)	Progressive changes (II)	Regressive changes (III)
<i>Lamina epithelialis mucosae</i>	Smooth surface covered with mucous Mucous cells slightly filled with mucous Cellular integrity Supranuclear vacuolization	Hyperplasia and hypertrophy of mucous and epithelial cells	Irregular cell appearance Irregular surface of brush border Cell apartness Nuclear alterations Deposits Eosinophilic granular cells Leucocytes Atrophy/necrosis
<i>Lamina propria mucosae</i>	Developed and thin layer Oval shape nucleus Cells densely packed in uninterrupted circular layer Outside intestinal folds	Hyperplasia and hypertrophy of connective tissue	Cytoplasmic vacuoles Cloudy swelling Deterioration and fragmentation Disjunction Eosinophilic granular cells Leukocyte infiltration Atrophy/necrosis
<i>Lamina muscularis mucosae</i>	Developed and thickened muscle layer Heterogeneous fiber shape Nucleus oval in shape Muscular fibers densely packed in uninterrupted circular layer	Hyperplasia and hypertrophy of smooth muscle fibers	Picnotic nuclei Cytoplasmic vacuoles Clumping of muscle fibers Disrupted myofibril architecture/structure Desquamation of muscle fibers Eosinophilic granular cells Detachment Atrophy/necrosis

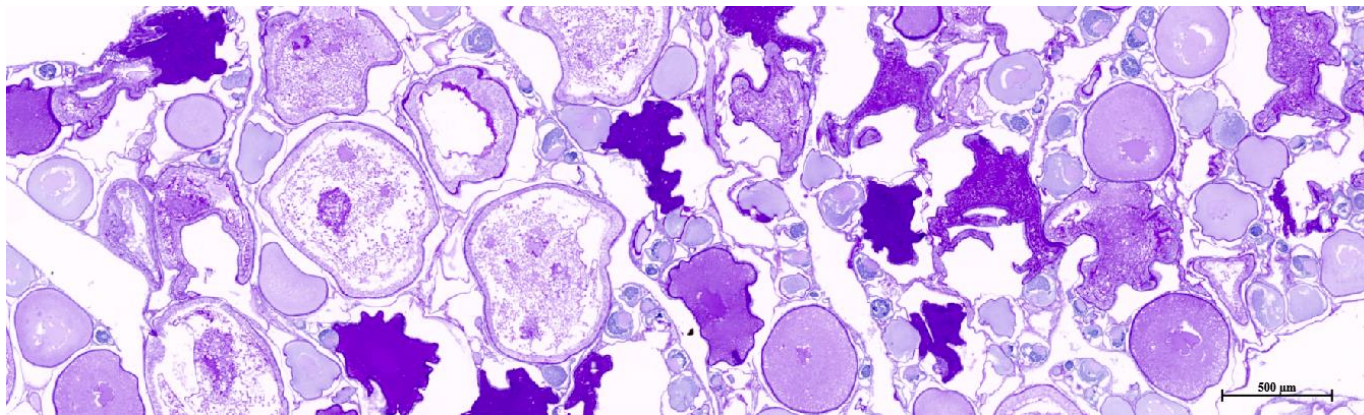
Quantitative histopathology



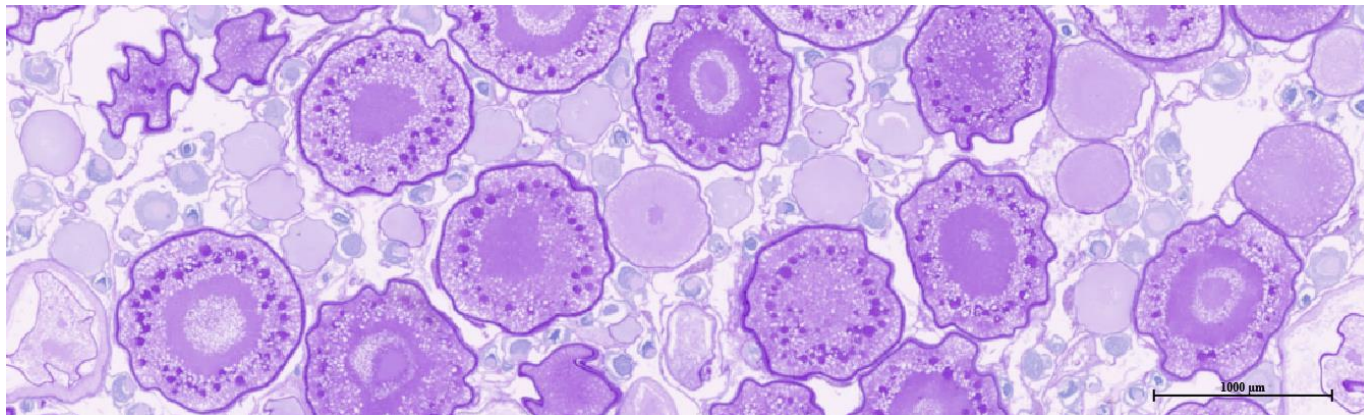
- height of intestinal lumen (hL);
- width of intestinal lumen (wL);
- height of intestinal fold (hF);
- width of intestinal fold (wF);
- total enterocyte height (hE);
- microvillus estimated height (height of the PAS positive stained zone), (hMV);
- height of supranuclear space (hSN);
- nucleus height (hN);
- nucleus width (wN);
- number of enterocyte nucleus over 100 μm fold distance (nNE);
- number of leukocytes over 100 μm fold distance (nL);
- number of granulocytes over 100 μm fold distance (nG);
- number of mucous cells over 100 μm fold distance (nM);
- mucous cell height (hMC);
- mucous cell width (wMC).



BRLJAN LAKE

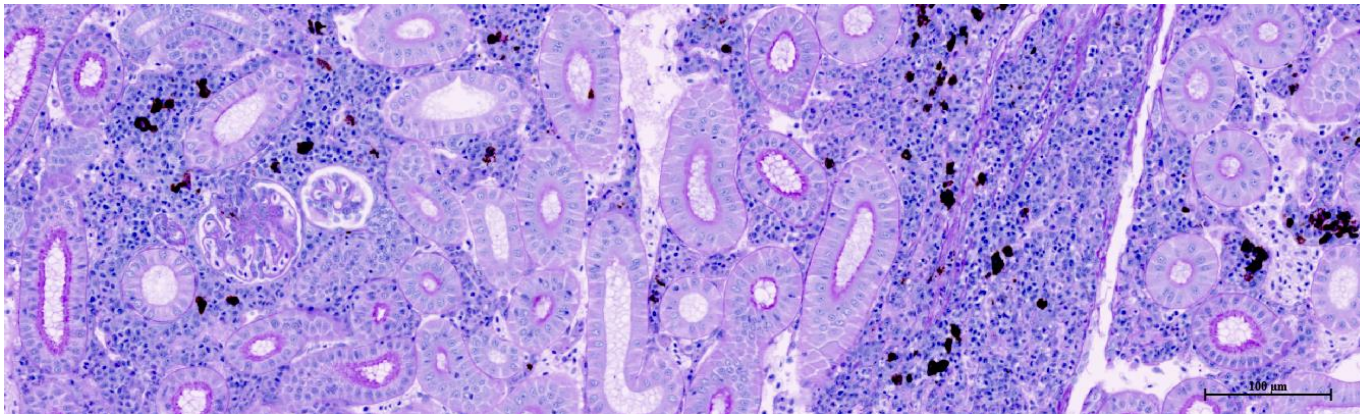


KNIN

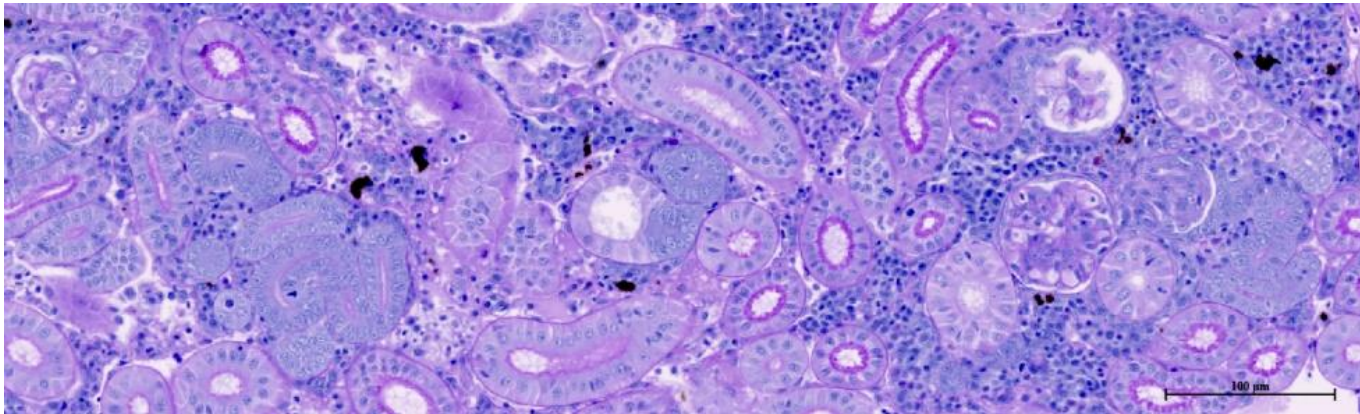


REFERENCE SITE

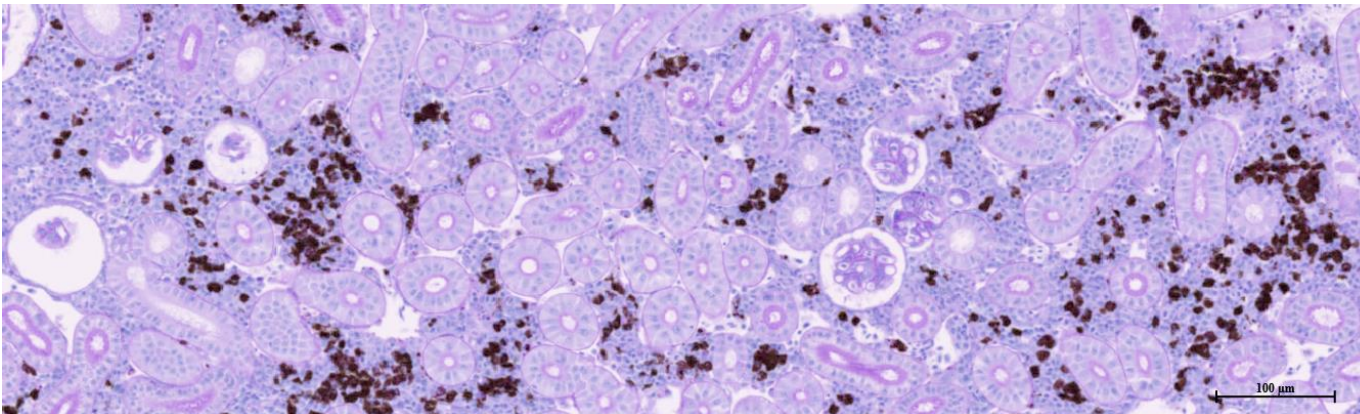
GONADS



BRLJAN LAKE

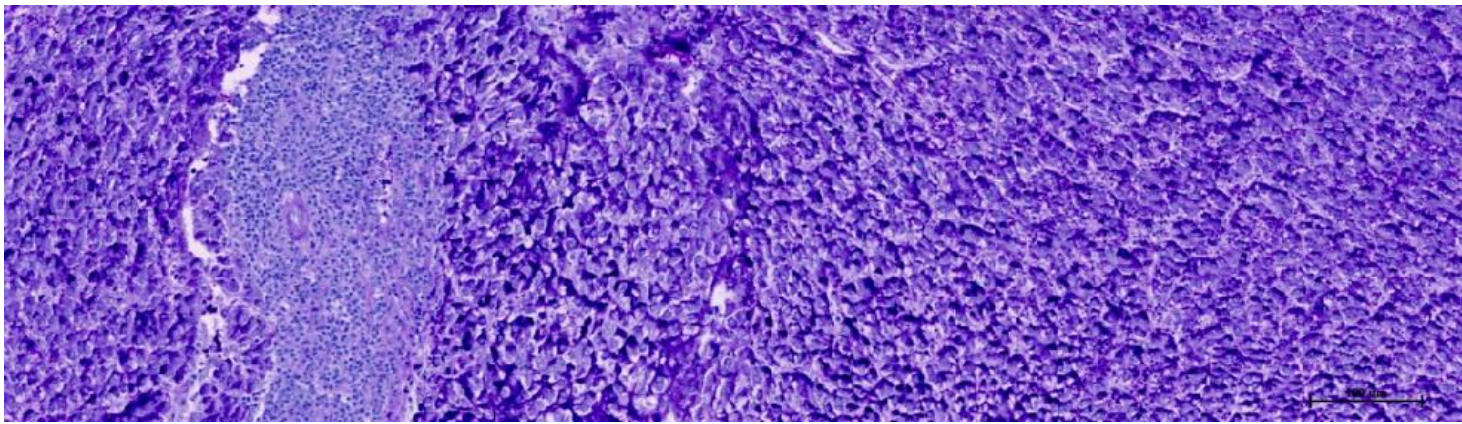


KNIN

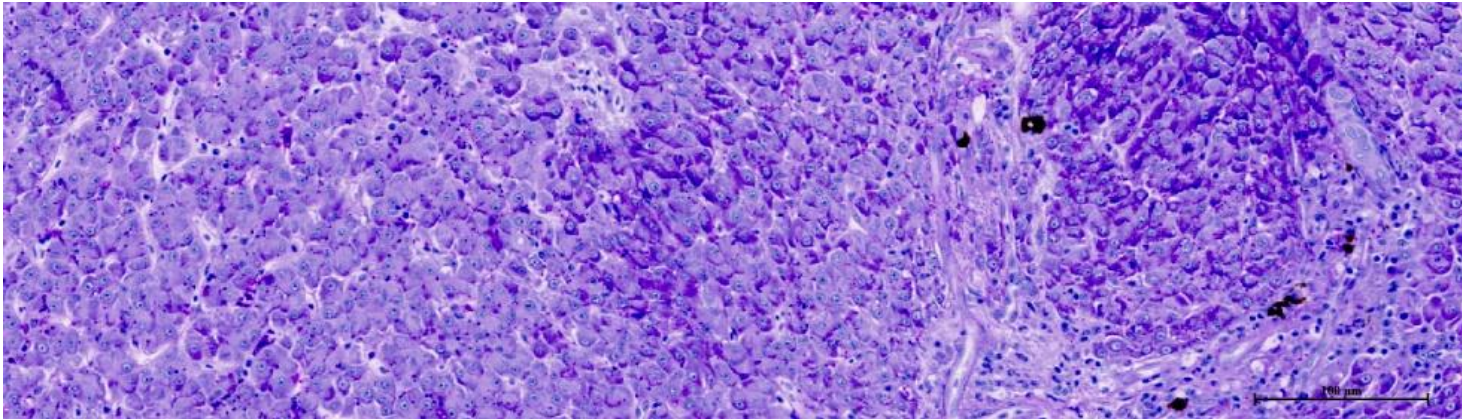


REFERENCE SITE

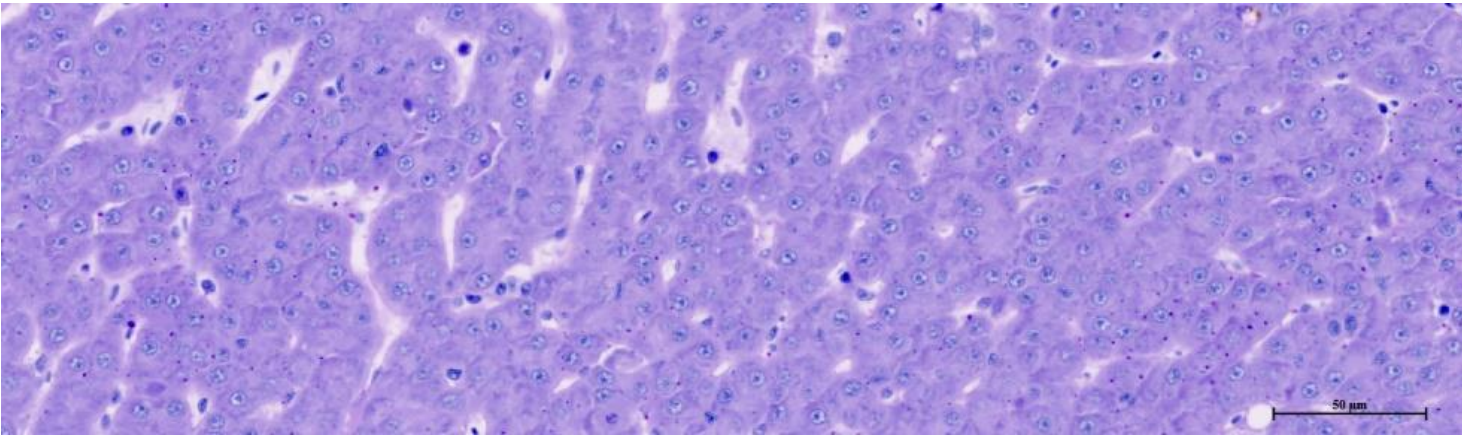
KIDNEY



**BRLJAN
LAKE**

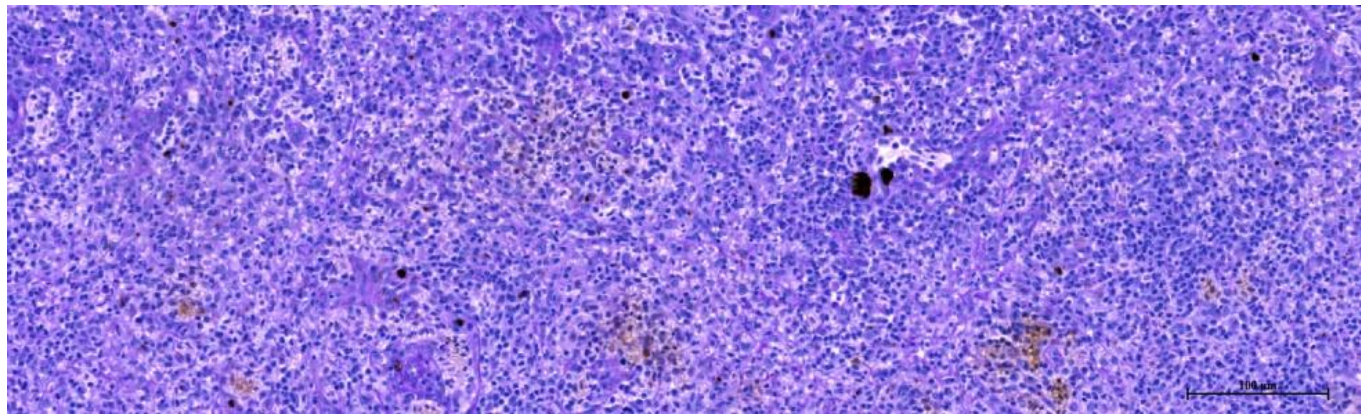


KNIN

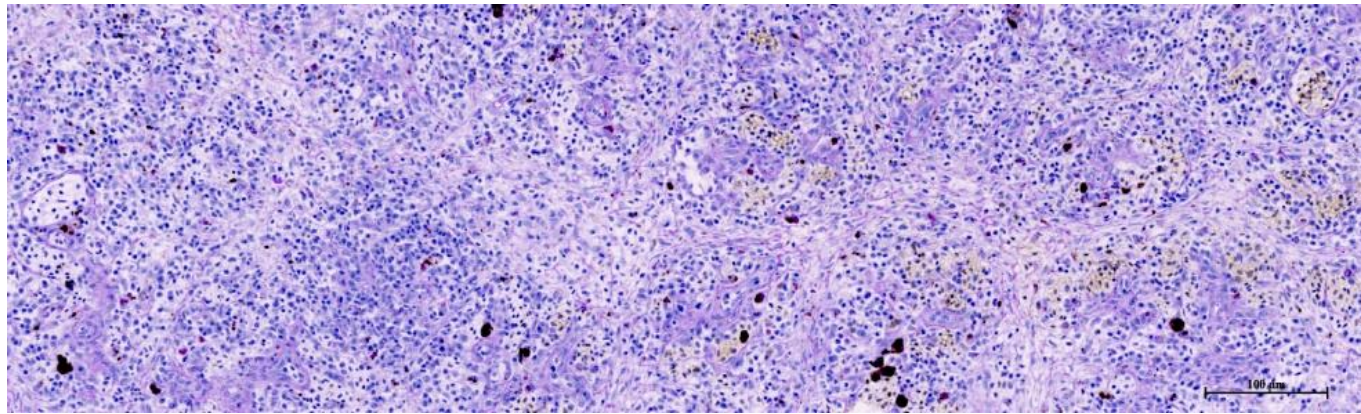


**REFERENCE
SITE**

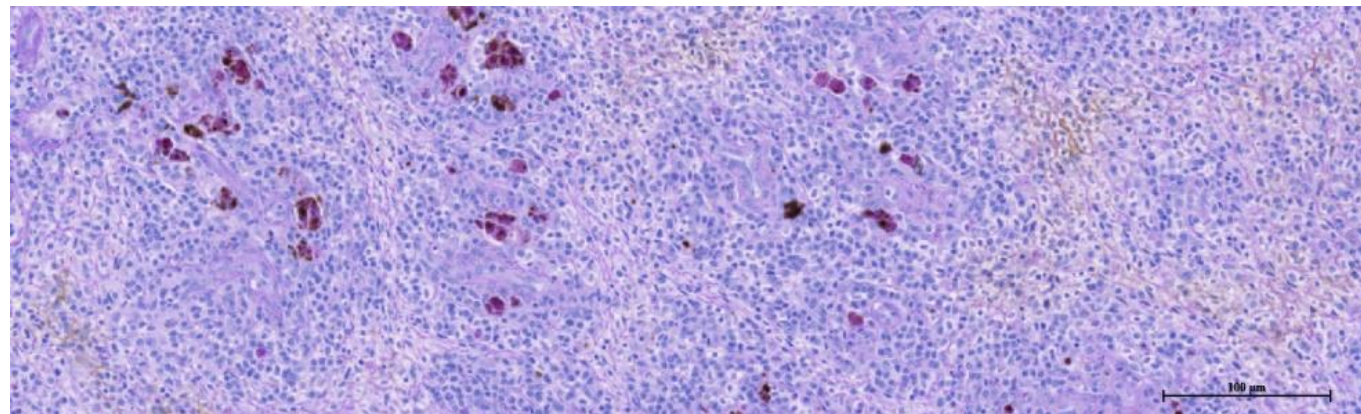
LIVER



**BRLJAN
LAKE**



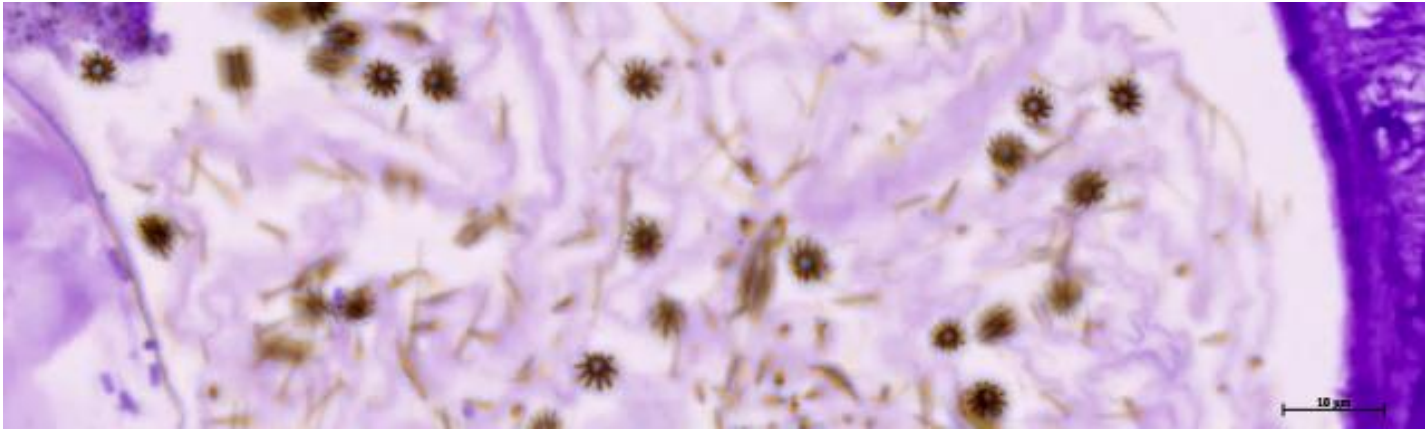
KNIN



REFERENCE SITE

SPLEEN

PLANKTON



Thank You

